

Features

- Cast bronze
- Above-the-counter installation
- Integral drain
- Without overflow
- 20-1/2" (521 mm) x 16-1/16" (408 mm)

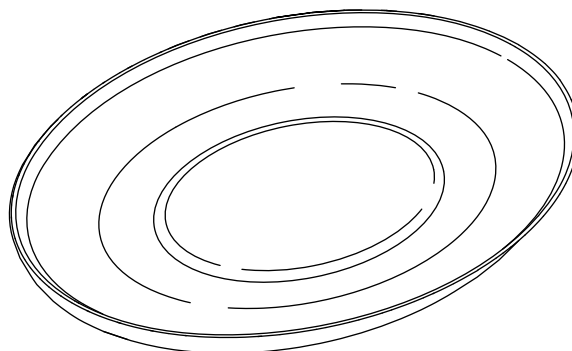
VESSELS BATHROOM SINK K-14015

ADA

Codes/Standards Applicable

Specified model meets or exceeds the following:

- ADA
- ICC/ANSI A117.1
- CSA B45
- IGC 194-2004a



Colors/Finishes

- DP1: Dark Patina

Accessories

- BV: Vibrant® Brushed Bronze
- Other: Refer to Price Book for additional colors/finishes

Specified Model

Model	Description	Colors/Finishes	
K-14015	Vessels bathroom sink	<input type="checkbox"/> DP1	
Recommended Accessories			
K-9018	P-Trap	<input type="checkbox"/> BV	<input type="checkbox"/> Other _____

Product Specification

The vessels bathroom sink shall be made of cast bronze. Bathroom sink shall be above-the-counter installation. Bathroom sink shall be 20-1/2" (521 mm) in length and 16-1/16" (408 mm) in width. Bathroom sink shall have an integral drain. Bathroom sink shall be without overflow. Vessels bathroom sink shall be Kohler Model K-14015-DP1.

Technical Information

Fixture*:	
Basin area	20-1/16" (510 mm) x 15-11/16" (399 mm)
Water depth	2-1/2" (64 mm)
Drain hole	Ø 1-1/4" (32 mm)
* Approximate measurements for comparison only.	
Included components:	
Hardware Kit	1139197
Cut-out template	1139198
Tube, Drain Tailpiece	1036351

Installation Notes

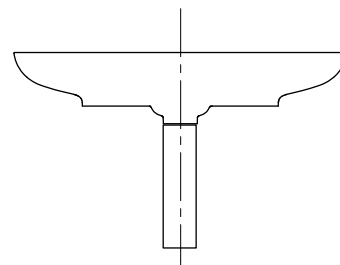
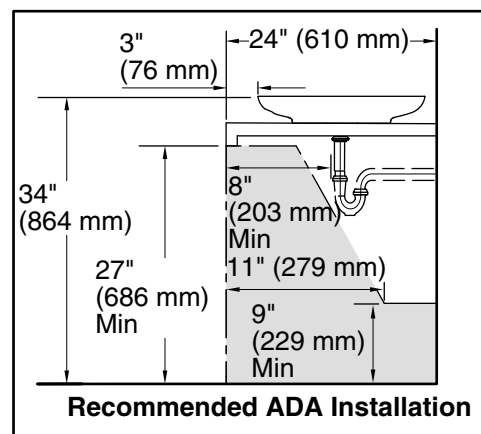
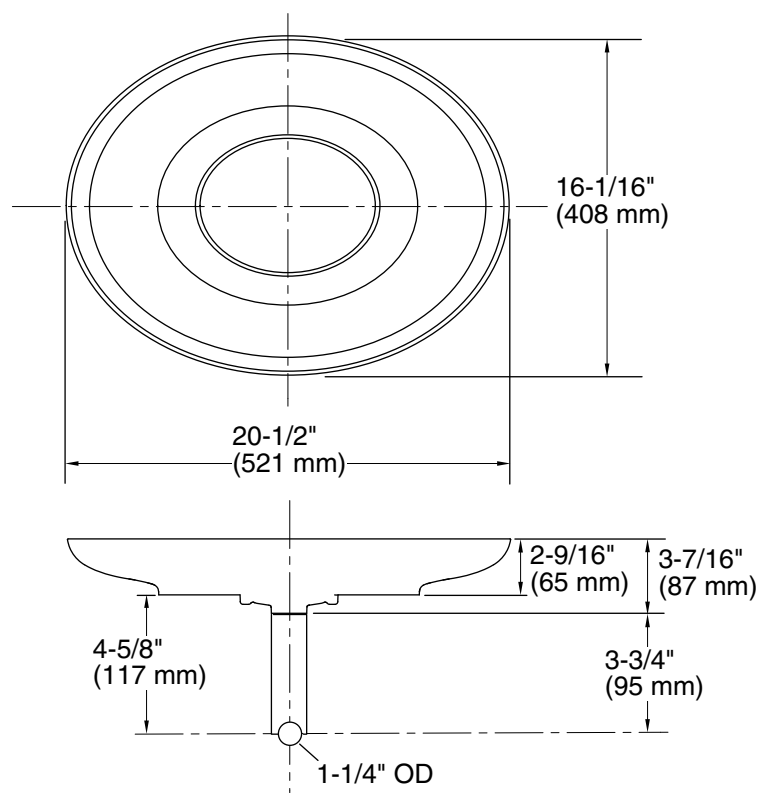
Install this product according to the installation guide.

Product does not have an overflow.

Spout must be 5" (127 mm) long (min) for adequate clearance into the bathroom sink when installed with the centerline as shown.

Spout must be tall enough to clear 3" (76 mm) rim height and provide a 1" (25 mm) air gap per ASME A112.1.1

NOTICE: Countertop manufacturer or cutter must use the cut-out template provided with product, or a current one provided by Kohler Co. (call 1-800-4-KOHLER). Kohler Co. is not responsible for the cut-out errors when the incorrect cut-out template is used.



Product Diagram