

### BATHROOM SINK FAUCET **K-7404-K** ALSO K-7404

#### Features

- Brass construction
- Brass valve bodies
- Quarter-turn washerless ceramic disc valves
- 4" (102 mm) spout reach
- For 4" (102 mm) centers
- Available with standard or vandal-resistant Water-Guard® aerator
- Variety of handle style options
- 1.5 gallons (5.7 L) per minute

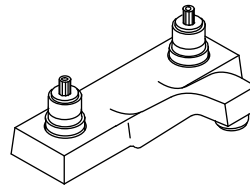
ADA CSA B651 OBC



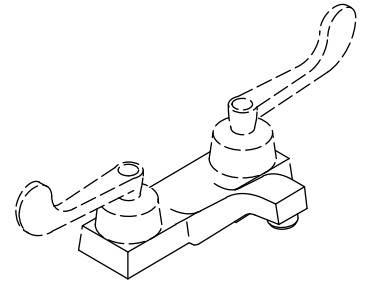
#### Codes/Standards Applicable

Specified model meets or exceeds the following at date of manufacture:

- ADA
- ICC/ANSI A117.1
- CSA B651
- OBC
- ASME A112.18.1/CSA B125.1
- NSF 61
- EPA WaterSense®



**K-7404-K**



**K-7404**

#### Colors/Finishes

- CP: Polished Chrome

#### Accessories

- CP: Polished Chrome

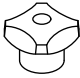
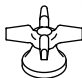
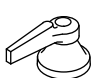

#### Specified Model

Model	Description	Colors/Finishes
K-7404-K	Triton bathroom sink faucet with standard aerator – less handles	<input type="checkbox"/> CP
K-7404-KE	Triton bathroom sink faucet with vandal-resistant aerator – less handles	<input type="checkbox"/> CP
K-7404-2A	Triton bathroom sink faucet with standard handles and standard aerator	<input type="checkbox"/> CP
K-7404-5A	Triton bathroom sink faucet with wristblade lever handles and standard aerator	<input type="checkbox"/> CP

#### Product Specification

Two-handle centerset bathroom sink faucet shall be made of brass construction with brass valve bodies. Faucet shall feature quarter-turn washerless ceramic disc valves, assuring positive handle stop positioning. Product shall feature a flow rate of 1.5 gallons (5.7 L) per minute. Product shall include 4" (102 mm) centers and 4" (102 mm) spout. Optional features shall be standard or vandal-resistant Water-Guard® aerator. Base faucet shall be Kohler Model K-7404-\_\_\_\_\_-CP with Kohler Model K-16010-\_\_\_\_\_-CP handles OR complete faucet shall be Kohler Model K-7404-\_\_\_\_\_-CP.

# TRITON®

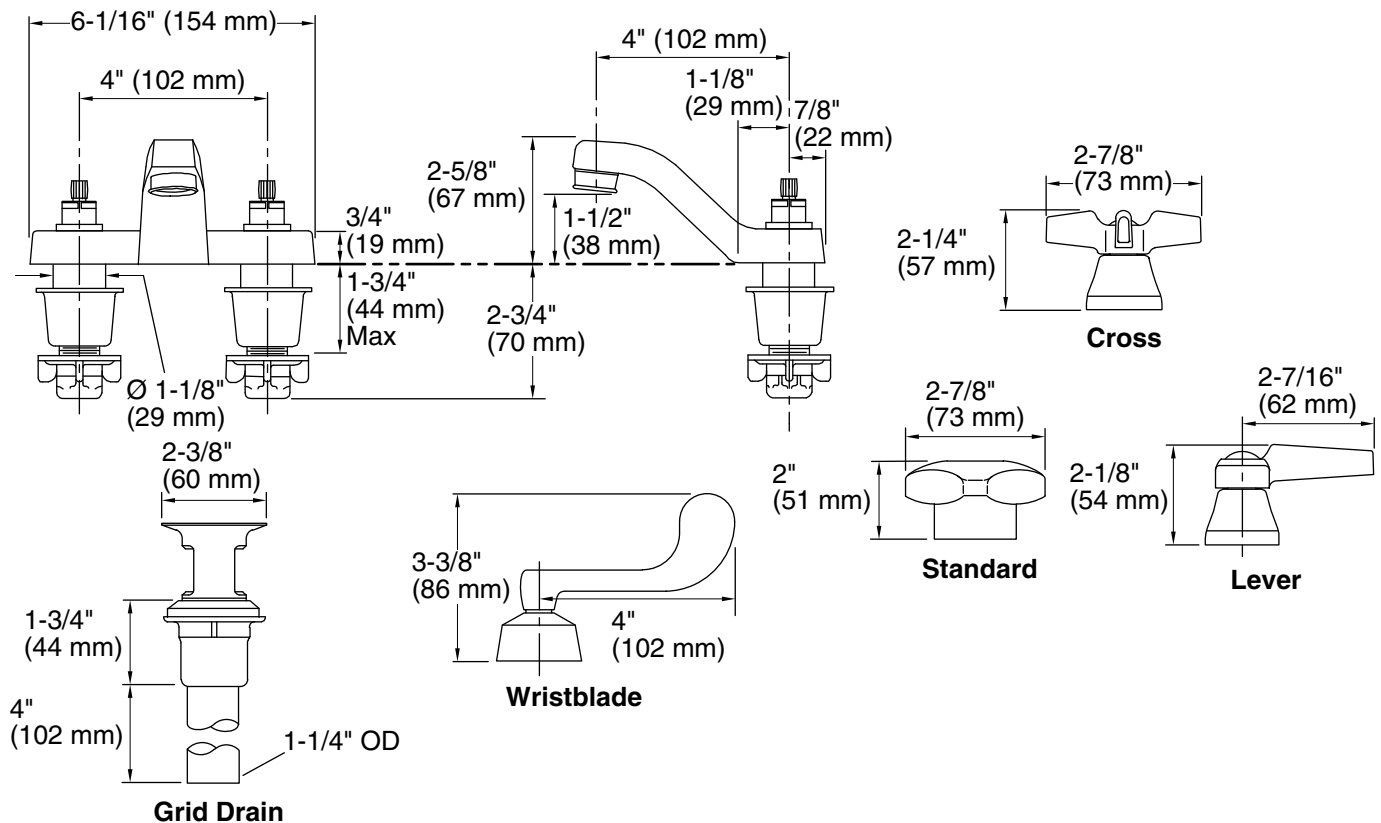
Required Accessories					
K-16010-2	Triton standard handles	<input type="checkbox"/> CP			
K-16010-3	Triton cross handles		<input type="checkbox"/> CP		
K-16010-4	Triton lever handles			<input type="checkbox"/> CP	
K-16010-5	Triton wristblade lever handles				<input type="checkbox"/> CP

Optional Accessories		
1160595	Medium Spray 0.35 gpm (1.32 lpm) – Insert only	<input type="checkbox"/> NA
1160594	Large Spray 0.35 gpm (1.32 lpm) – Insert only (For K-7404-KE only)	<input type="checkbox"/> NA
_____	Additional flow options are available (refer to the Price Book)	<input type="checkbox"/> NA

## Installation Notes

Install this product according to the installation guide.

**ADA, CSA B651, OBC** compliant when installed to the specific requirements of these regulations.



## Product Diagram